

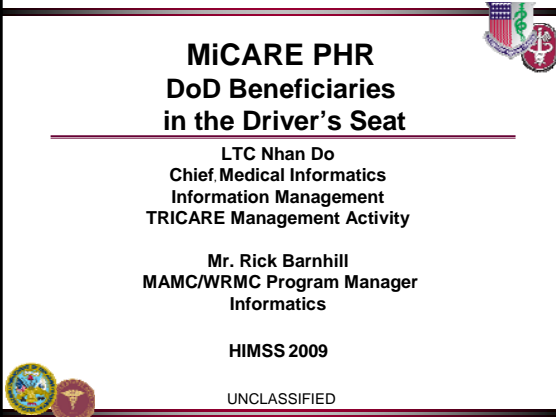
**MiCARE PHR**  
**DoD Beneficiaries**  
**in the Driver's Seat**

LTC Nhan Do  
 Chief, Medical Informatics  
 Information Management  
 TRICARE Management Activity

Mr. Rick Barnhill  
 MAMC/WRMC Program Manager  
 Informatics

HIMSS 2009

UNCLASSIFIED




---

---

---

---

---

---

---

---

**Why use a Personal Health Record (PHR)?**

- **Convenient access to health record**
- **Vehicle for information sharing and exchange**
- **Allows for greater individualized healthcare**
- **Improve communication**

---

---

---

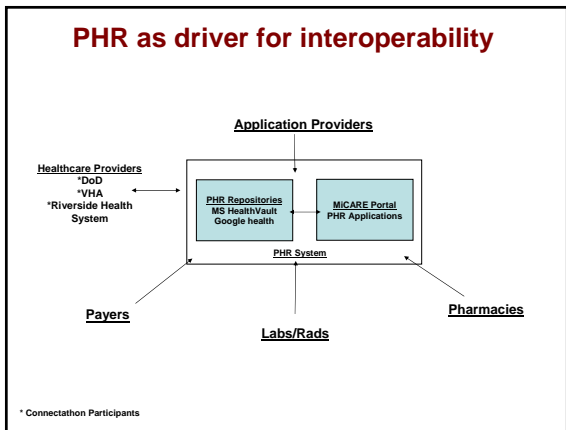
---

---

---

---

---




---

---

---

---

---

---

---

---

## Use Case

- Service member (SM) is discharged from Madigan Army Medical Center (MAMC) at Fort Lewis, Washington to convalesce at home in Hampton Roads, Virginia.
- SM enrolls in MiCARE portal.
- SM selects Microsoft HealthVault as PHR Vendor from the MiCARE portal.
- SM selects EHR data elements to be shared in his PHR.
- SM is seen by a surgeon in the Riverside Health System (RSH).

---

---

---

---

---

---

---

---

## Use Case Continued

- SM authorizes MAMC's operative reports, discharge summary, allergies, and medications from HealthVault to be shared with RSH surgeon.
- Health encounter information from RSH is electronically uploaded to HealthVault.
- SM returns to Ft. Lewis for follow up.
- MAMC Primary Care Manager accesses problem list & medications from patient's PHR and refer patient for multiple consultations from civilian care network.
- Completed consults from network are electronically uploaded to patient's PHR from EHRs by Allscripts and Greenway.

---

---

---

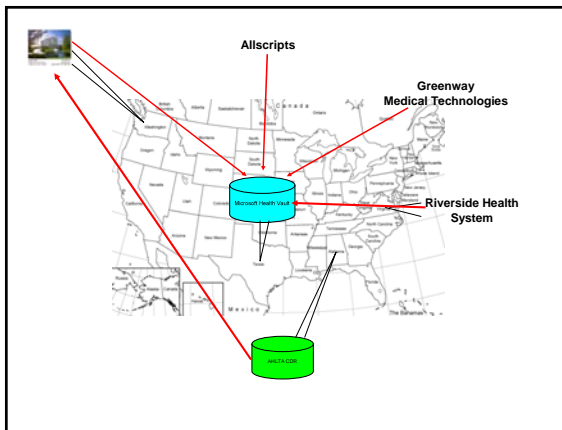
---

---

---

---

---



---

---

---

---

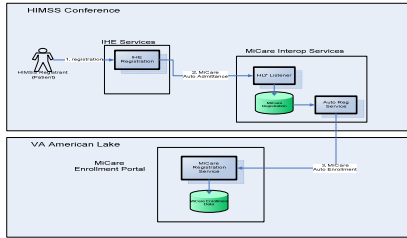
---

---

---

---

## HIMSS MiCARE Interoperability



1. A HIMSS Registrant signs up for the Military Care Story. Their badge number is logged in the IHE HealthVault.  
2. The MiCARE Interop Services receive an HL7-based admission message.  
3. The MiCARE Registration web service is called to automatically enroll the patient.  
4. The Registrant will visit the MiCare booth and will link their enrollment to their HealthVault account (this shown here).

---

---

---

---

---

---

---

---

## Why MiCARE?

- Patient controlled health record
- Available online
- Can be shared with Family Members, Civilian Providers and other selected individuals
- Can be connected to many sources of data

---

---

---

---

---

---

---

---

## Data Provided by MiCARE

- Allergies
- Active Medications
- Lab Results
- Inpatient/Outpatient Notes
- Appointments
- Conditions
- Procedures
- Radiology Reports

---

---

---

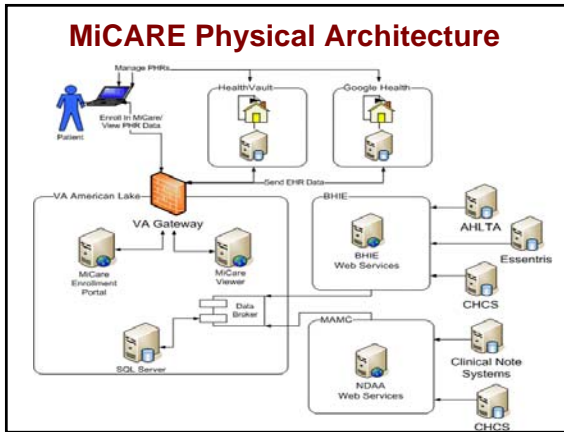
---

---

---

---

---




---



---



---



---



---



---

- ### How does Enrollment work?
- Requires Microsoft Live and/or Google account
  - Enroll in person
  - Register online using Common Access Card
  - Allows beneficiary to choose MiCARE record types to share
  - Ability to enroll and manage PHR for dependants

---



---



---



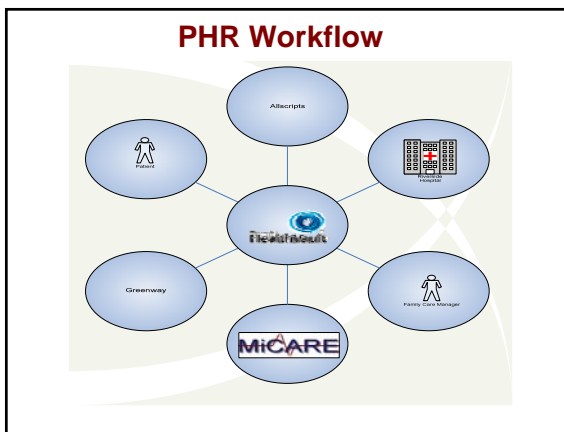
---



---



---




---



---



---



---



---



---



**Contact Information**

LTC Nhan V Do, MD, MS, FACP  
Chief, Medical Informatics  
Information Management  
TRICARE Management Activity  
703 681 7899 x1239  
[Nhan.Do@amedd.army.mil](mailto:Nhan.Do@amedd.army.mil)

Rick Barnhill  
MAMC/WRMC Program Manager, Informatics  
253-968-4376  
[Richard.Barnhill@us.army.mil](mailto:Richard.Barnhill@us.army.mil)

---

---

---

---

---

---

---

---