

KeyHIE
Keystone Health Information Exchange
The right information, right now.

HEALTH INFORMATION EXCHANGE • KEYSTONE HEALTH INFORMATION EXCHANGE • KEYSTONE HEALTH INFORMATION EXCHANGE

IHE Deployment Case Study
April 06, 2009

Jim Younkin
KeyHIE Project Director

Copyright 2009 Keystone Health Information Exchange™

April 2009

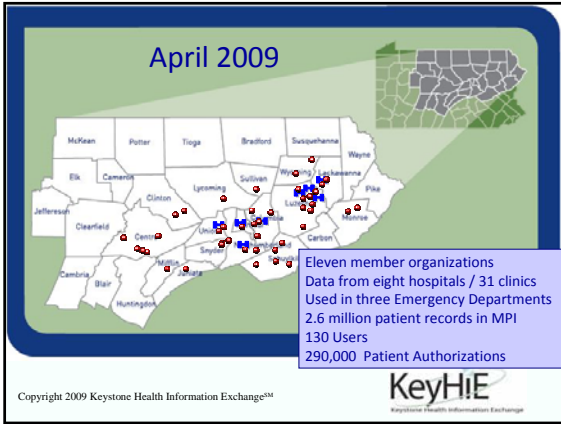
Eleven member organizations
Data from eight hospitals / 40+ clinics
Used in three Emergency Departments
2.6 million patient records in MPI
130 Users
290,000 Patient Authorizations

Copyright 2009 Keystone Health Information Exchange™

April 2009

Eleven member organizations
Data from eight hospitals / 40+ clinics
Used in three Emergency Departments
2.6 million patient records in MPI
130 Users
290,000 Patient Authorizations

Copyright 2009 Keystone Health Information Exchange™



KeyHiE Implementation Strategy...

- Leverage systems and data sources already in place to avoid high start-up costs
- Build incrementally
- Adopt national models and standards
 - Connecting for Health
 - IHE
 - HITSP

Copyright 2009 Keystone Health Information Exchange™

KeyHiE
Keystone Health Information Exchange

KeyHiE
Keystone Health Information Exchange

The right information, right now.

Please Login:

Username:

Password:

Are you a new user with an activation letter? [Click here to activate your account](#)

Have you forgotten your password? [Reset your password](#)

The Keystone Health Information Exchange (KeyHiE™) supports timely care for patients throughout central and northeastern Pennsylvania by the secure exchange of clinical information. See www.keyhie.org for more information.

The Keystone Health Information Exchange provides registered clinicians with fast access to their patient's information in healthcare facilities across central and northeastern Pennsylvania. Currently the Exchange is only available to clinicians taking part in the pilot project. Access will be expanded in the near future to include ED clinicians in other facilities.

If you are a clinician at any of the following emergency departments, please contact us using the link above to find out how you can participate:

- Bloomsburg Hospital ED
- Geisinger Medical Center ED
- Shamokin Area Community Hospital ED

Demo

Marcus Allen (ED Board)
Russell Robinson (A1V854393)

DEMONSTRATION

IHE Profiles

PIX, HITSP TP22 Patient lookup by ID	ATNA, HITSP T17 Secure node	<p><u>FUTURE</u></p> <div style="border: 1px solid black; padding: 5px; margin-bottom: 5px;">PDQ, HITSP T23 Patient lookup by demographics</div> <div style="border: 1px solid black; padding: 5px;">XDS-MS, HITSP C32 Medical Summary</div>
XDS, HITSP TP13 Document storage/retrieval	ATNA, HITSP T15 Audit logging	
BPPC, HITSP TP30 Consent	CT, HITSP T16 Consistent Time	
XDS-SD, HITSP C62 Discharge Summary History & Physical Radiology Report		

Copyright 2009 Keystone Health Information ExchangeSM

Selection Process

- Started with HIMSS
- Contracted with IHE-vetted professional to navigate RFP process
- Developed requirements
- Request for Proposal sent to vendors...
 - IHE “certified” for PIX and XDS Registry/Repository
 - Hosting capabilities
 - Grant-related time constraints

Copyright 2009 Keystone Health Information ExchangeSM

Requirements

- Provide and Register Documents
- Query and Retrieve
- Interface set up with Registry / Repository
- Document Consumers
- Document Sources
- Integrate with KeyHIE Infrastructure
 - CMPI, RLS, Network

Copyright 2009 Keystone Health Information ExchangeSM

What's Next?

- More ED's
- Case managers / Medical Home
- PCP's
- Home Health
- Long Term Care / Assisted Living
- Emergency Responders

Copyright 2009 Keystone Health Information Exchange™



What's Next?

- » Lab Results
- » Medication Lists
- » Radiology Reports
- » Allergies
- » Consults
- » Pathologies
- » Problem Lists
- » Patient Summaries (CCD)
- » Transfer Summaries

Copyright 2009 Keystone Health Information Exchange™



Contact Information

Jim Younkin – Project Director KeyHIE
IT Program Director, Geisinger Health System
jyounkin@geisinger.edu

Copyright 2009 Keystone Health Information Exchange™