

Supporting Interoperability at the Point of Care

Evidence Based Clinical Content	Drug Decision Support	Order Sets	Inter-disciplinary Documentation	Evidence Based Practice Guidelines	Interactive Skills & Procedures	Data Mining Solutions	Outcome Analysis
• First Consult	• Clinical Pharmacology	• Order Sets	• Clinical Practice Model Resource Center (CPMRC)	• Procedures Consult	• Imaging Consult	• Pinpoint Compliance	• Pinpoint Quality
• MD Consult	• Alchemy			• Mosby's Nursing Skills	• Pinpoint Review		
• Doctor Consult.de							
• Mosby's Nursing Consult							

4 |

IHE

IHE (Integrating the Healthcare Enterprise) is an initiative by healthcare professionals and industry to improve the way computer systems in healthcare share information. IHE promotes the coordinated use of established standards to address specific clinical needs in support of optimal patient care.

5 |

The CPM Resource Center (CPMRC): Industry Leaders in Healthcare Transformation



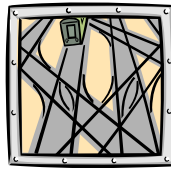
- Founded in 1983, internationally renowned point-of-care experts on best practice work flow, evidence-based content, interdisciplinary professional practice and healthy culture work
- 25 year history and legacy
 - "Co-Create the Best Places to Give and Receive Care"
 - Evolving the Clinical Practice Model (CPM)
 - Advancing professional practice, evidence-based paper and automated clinical documentation tools
 - Nursing/interdisciplinary leadership and credibility
 - Leading practice technology integration
 - Long-term partnerships through CPMRC International Healthcare Consortium

Common Framework for Technical Interoperability



We need a "common framework" of standards and policies to foster interoperability.

Secretary Mike Leavitt
Health and Human Services (HHS)
2005



Common Framework for Practice Interoperability



We need a "common framework" for practice to foster best places to give and receive care.

Bonnie Wesorick
Founder, CPM Resource Center
1983



Interoperability



“Interoperability is the ability of different information technology systems, software applications and networks to communicate, to exchange data accurately, effectively and consistently, and to use the information that has been exchanged.”

—The National Alliance for Health Information Technology



9

Microsoft on Interoperability



Interoperability is all about different software products working together.

Interoperability is important to people and organizations as they exchange data between each other in our increasingly connected world.



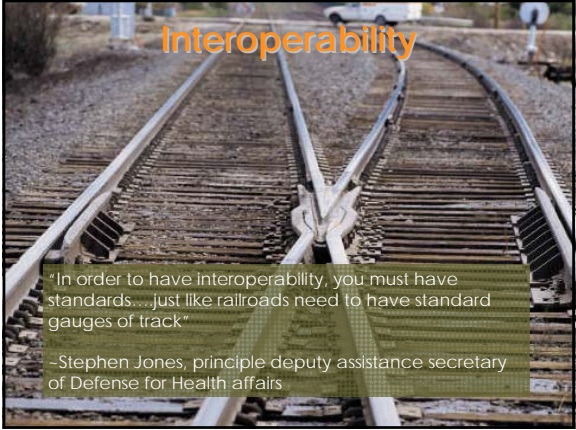
10

CPM Resource Center on Interoperability

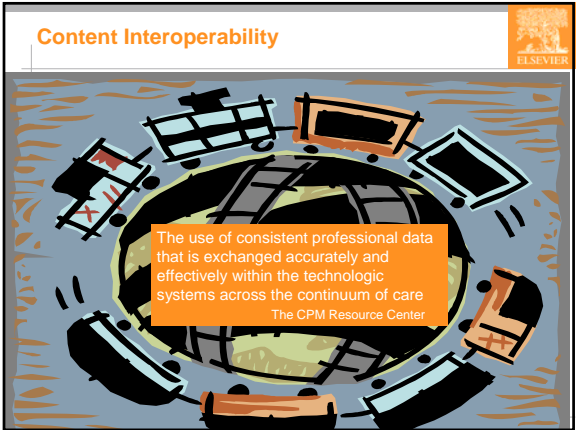


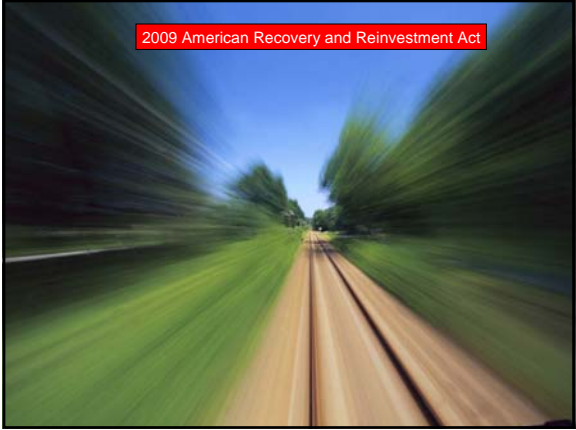
- Intentionally designed automation (IDA)TM expedites interoperable systems by preparing and engaging clinicians, supporting evidence-based practice and delivering quality and safety outcomes
- Practice interoperability is supported by utilizing a professional practice framework to exchange patient information and interdisciplinary professional services across all clinical settings
- Content interoperability is the use of consistent professional data within a practice framework that is exchanged accurately and effectively within the technological systems across the continuum of care
- Practice standards must integrate with HIT standards needed to secure exchange of patient and clinician information

11










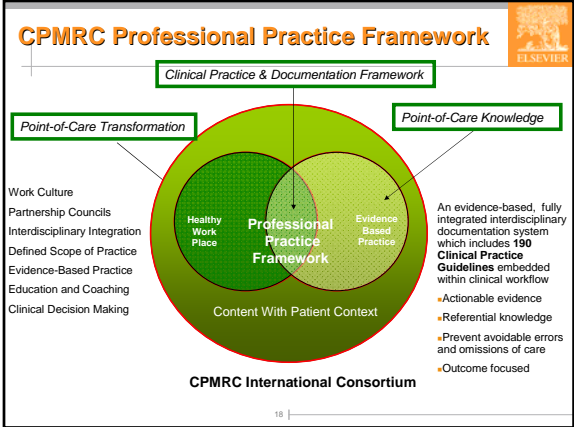


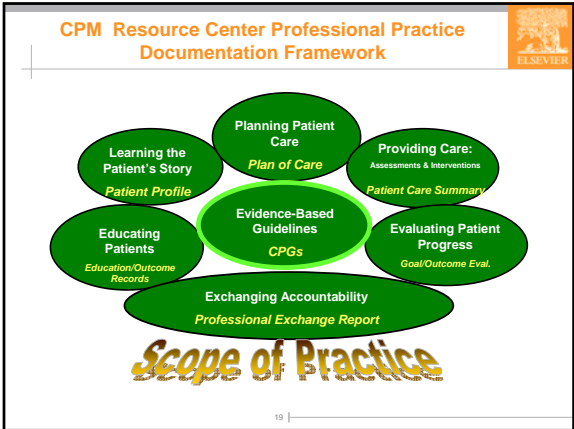
Evidence-Based Practice 

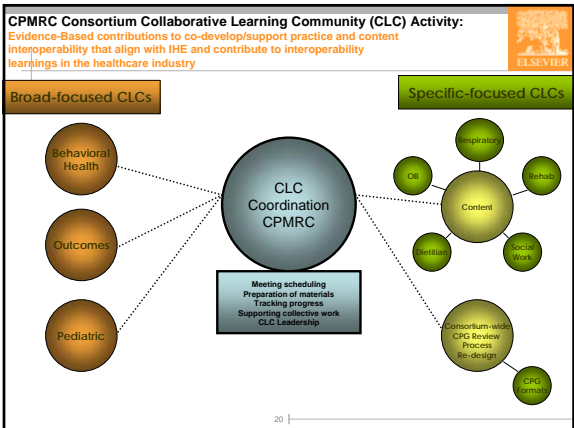
The integration of best research evidence with clinical expertise and patient values and situation.

Sackett, Strauss, Richardson, Rosenberg & Haynes, 2000

17 |







Static to Actionable Evidence-Based Care

- 37 Evidence-based Scales/Risk Screens
- Diverse patient populations
- 190 Evidence-Based Clinical Practice Guidelines
- Coordinated via a Professional Practice Framework
- Collective contributions and sharing across multiple sites
- Rapid adoption of standardized quality/evidence-based care

CPMRC Outcomes

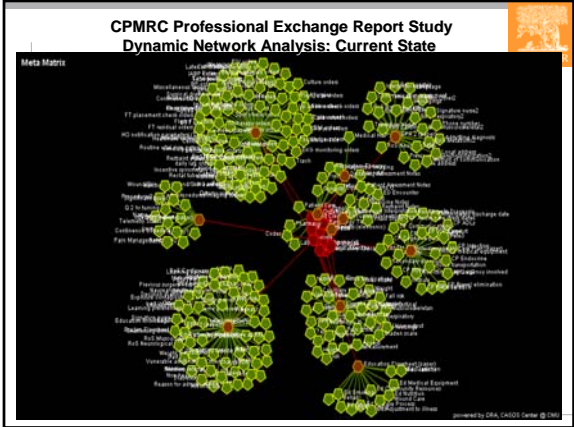
- 100% Joint Commission Compliance
- Increased Nursing Satisfaction
- Decreased Patient Falls
- Decreased Decubitus Ulcers
- Outperforms U.S. and mean regional CMS Core measure averages by 85-95%
- Tobacco Cessation Teaching Compliance
- Decreased Ventilator Associated Pneumonia (VAP)
- Increase in perceptions of Healthy Work Cultures
- Magnet Alignment and Recognition/Recertification

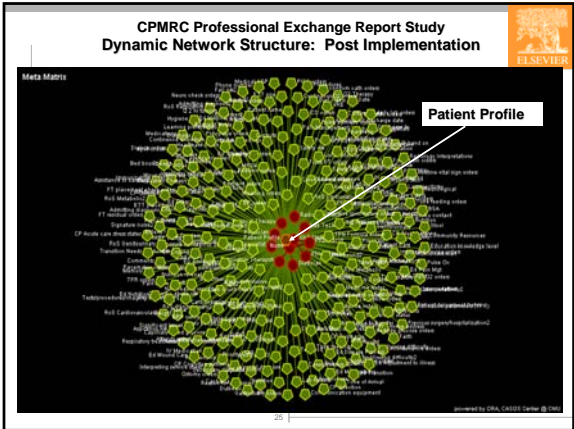
Example of CPM Framework intentionally designed into any HIT System

Patient Profile: Plan of Care:

“pre-loaded”

Education/Outcomes: Assessment/Interventions/Evaluation:





Questions?

26 |

ELSEVIER
