

HIMSS® 2009 Annual Conference & Exhibition

IHE In the Real World

*“What Are They Doing
& How Do I Get Started?”*

ACQUIRE



RESOLVE



USE



Initiate®

Know your data.
Trust your data.

Bill Klaver
Senior Sales Consultant
Initiate Systems, Inc.

Chris Voigt
Executive Consultant
CGI

HIMSS09
Annual Conference & Exhibition
APRIL 4-8, 2009 / CHICAGO

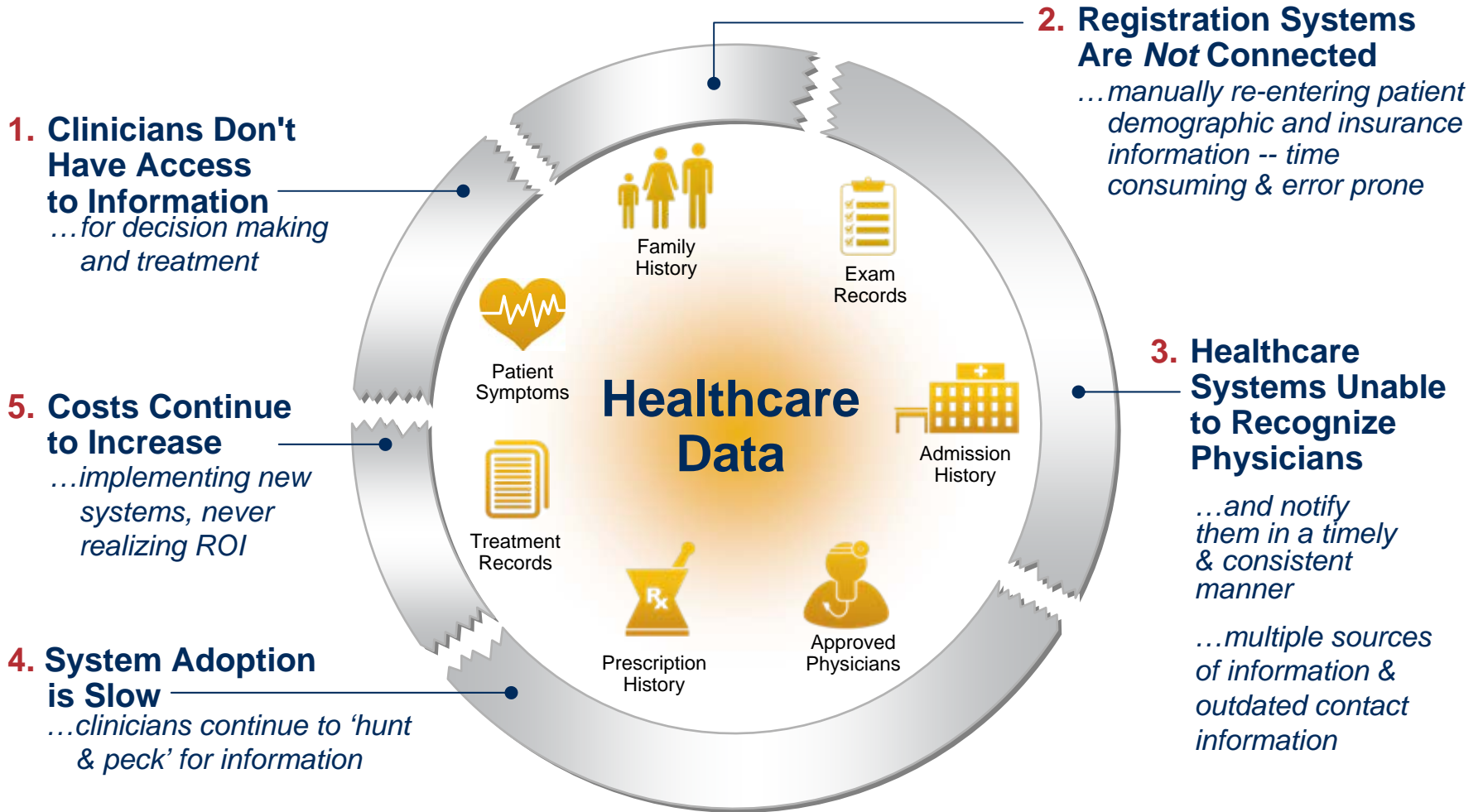
27 October 2009

What Healthcare Faces Worldwide...

- ▶ Hundreds of siloed solutions deployed (not integrated) to share the care data
- ▶ Expectation to deliver healthcare information to patients, providers, and even payers
- ▶ Expectation to better manage and share disease outbreak information
- ▶ Ecosystem is confused with standards:
 - W3C (XML) - HL7 (V2.X or HL7 V3) – Dicom - CDA
 - ANSI (X12 ISO) - CHIT & ASTM(CCR Continuity of Care Record)
 - OMG (EIS and RLU5) - AIIIM (Document Interchange)
 - NCPDP (Telecommunication Standard Version 5.1 and Batch 1.1)
- ▶ National initiatives try to clear clutter, but how do vendors prove themselves?
 - Canada (Infoway)
 - US (ONC, HIPAA, HITSP, NIST, HISPC)
 - Australia (NEHTA)
 - Europe (Various country & government sponsorship)
- ▶ Funding for improvements have no room for error or implementation missteps

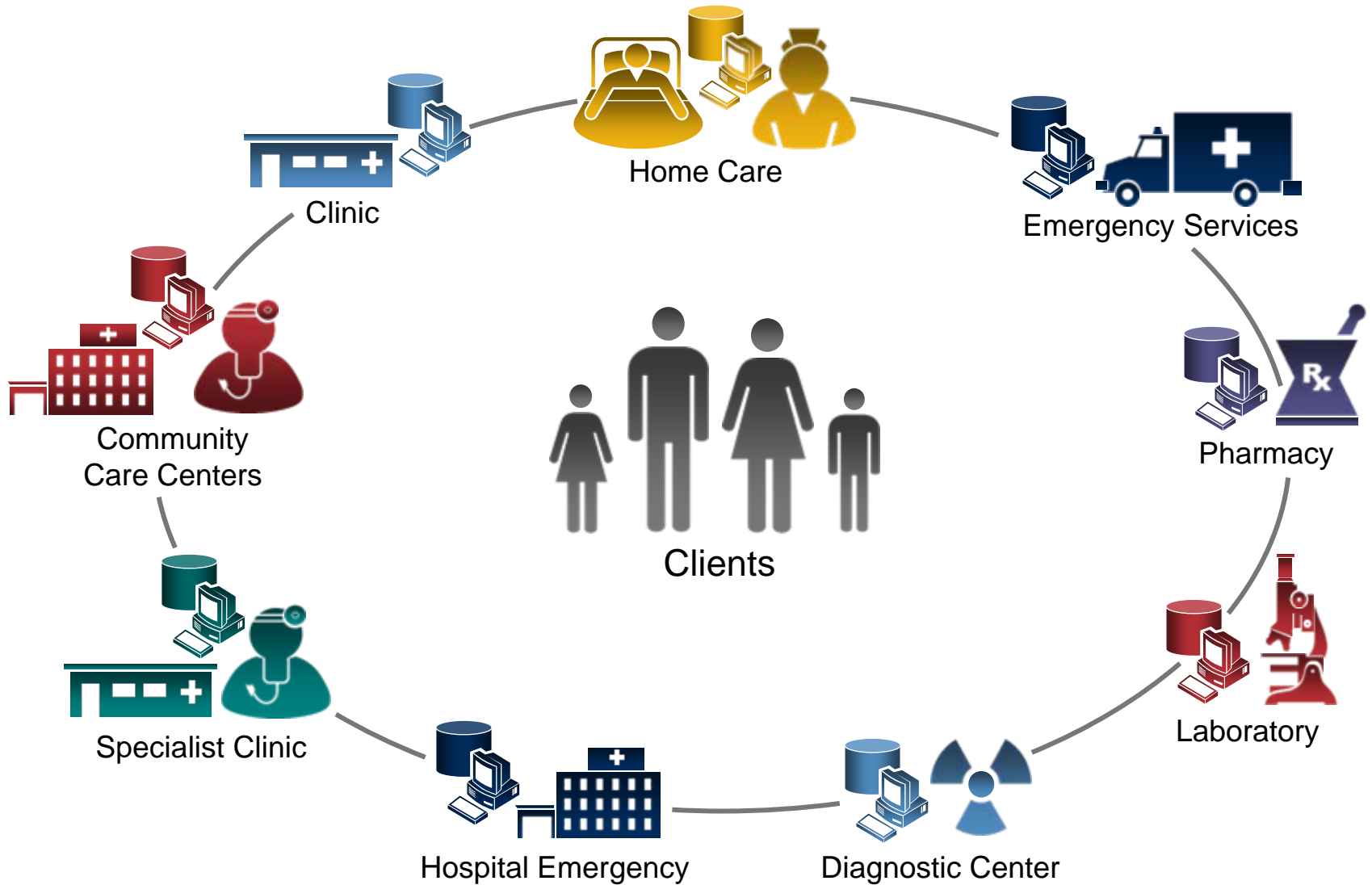


The Net Result: Inefficiencies from Fragmented Data



Recognizing that a Single View of Data Increases Efficiencies...is the First Step

What We Want: *Integrated Healthcare with Electronic Records*



What Problems Are CGI Asked to Fix?

▶ What Do I Build?

- Devising HIE architectures that navigating through complex set of health interoperability standards (hint: use IHE!)

▶ How Do I Build It?

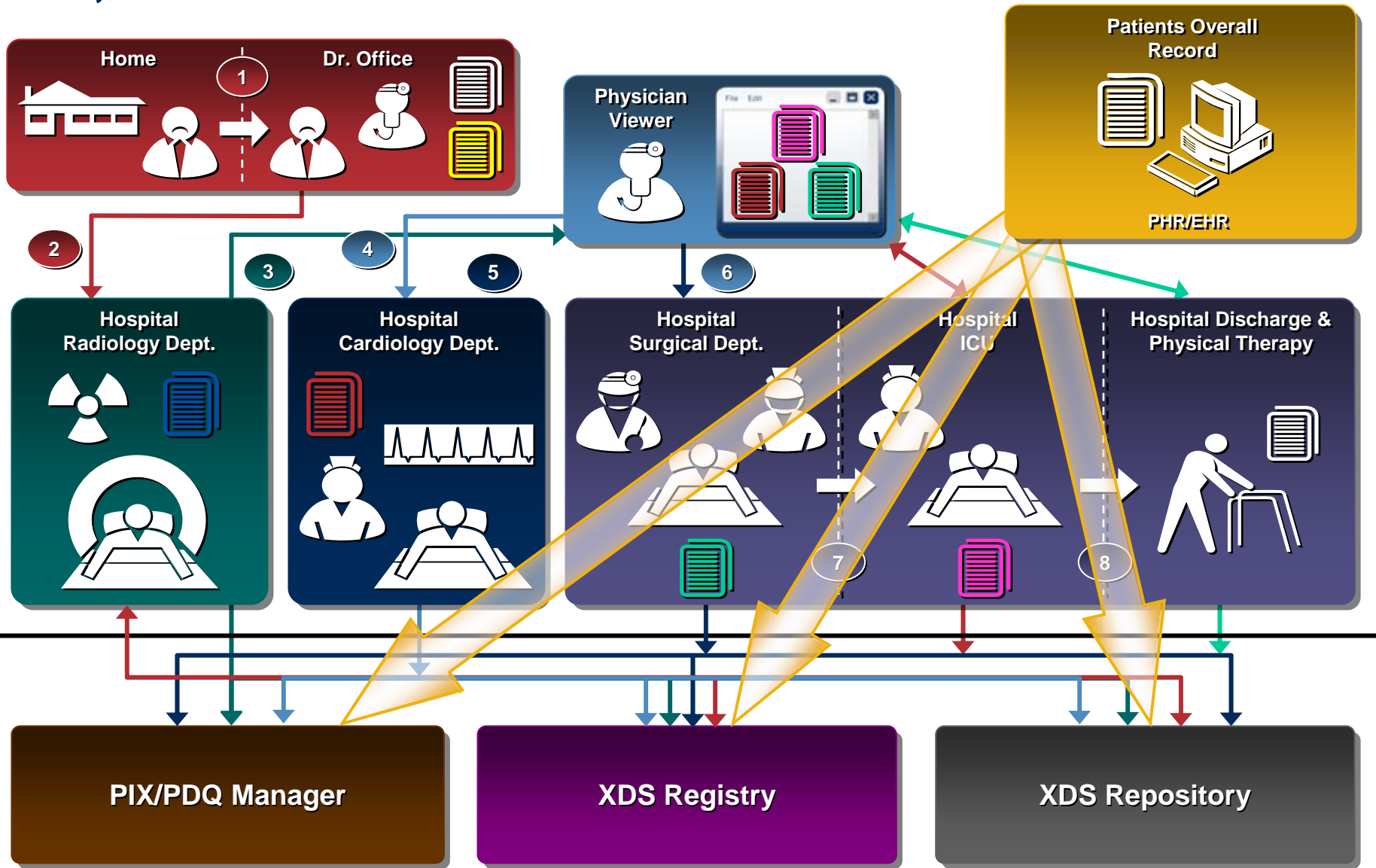
- Connecting systems that support standards
- Connecting systems that don't support standards
- Translating and transforming data

▶ How Do I Operate It?

- Operational support
- HelpDesk
- Training & Rollout
- Hosting



So, If We Had the IHE XDS Profile?



XDS Infrastructure



I Have Some Questions!

▶ How do I get started?

- Start with the infrastructure to enable sharing and insist on vendors who support that infrastructure
- Most will tackle the Patient Identity issue first
- Use and insist on IHE profiles for the infrastructure vendors

▶ Do I have to throw away what I already have?

- No – Insist that your current vendors support IHE
- Many of the vendors already support these industry standards:
 - › HL7 – messaging
 - › Dicom – document/image transfer
 - › PDF – document transfer



I Have Some Questions! (Cont'd)

▶ What drives success?

▪ Patients

- › Healthcare is about the patient!
- › Providers want to provide the best care, at the right time, for a reasonable price
- › Patients want more direct knowledge and control over their healthcare

▪ Education

- › Familiarize your staff in IHE profiles, and how your vendors support them
- › Follow HITSP, HISPC, and CCHIT

▶ How does this help me deliver an EHR/PHR?

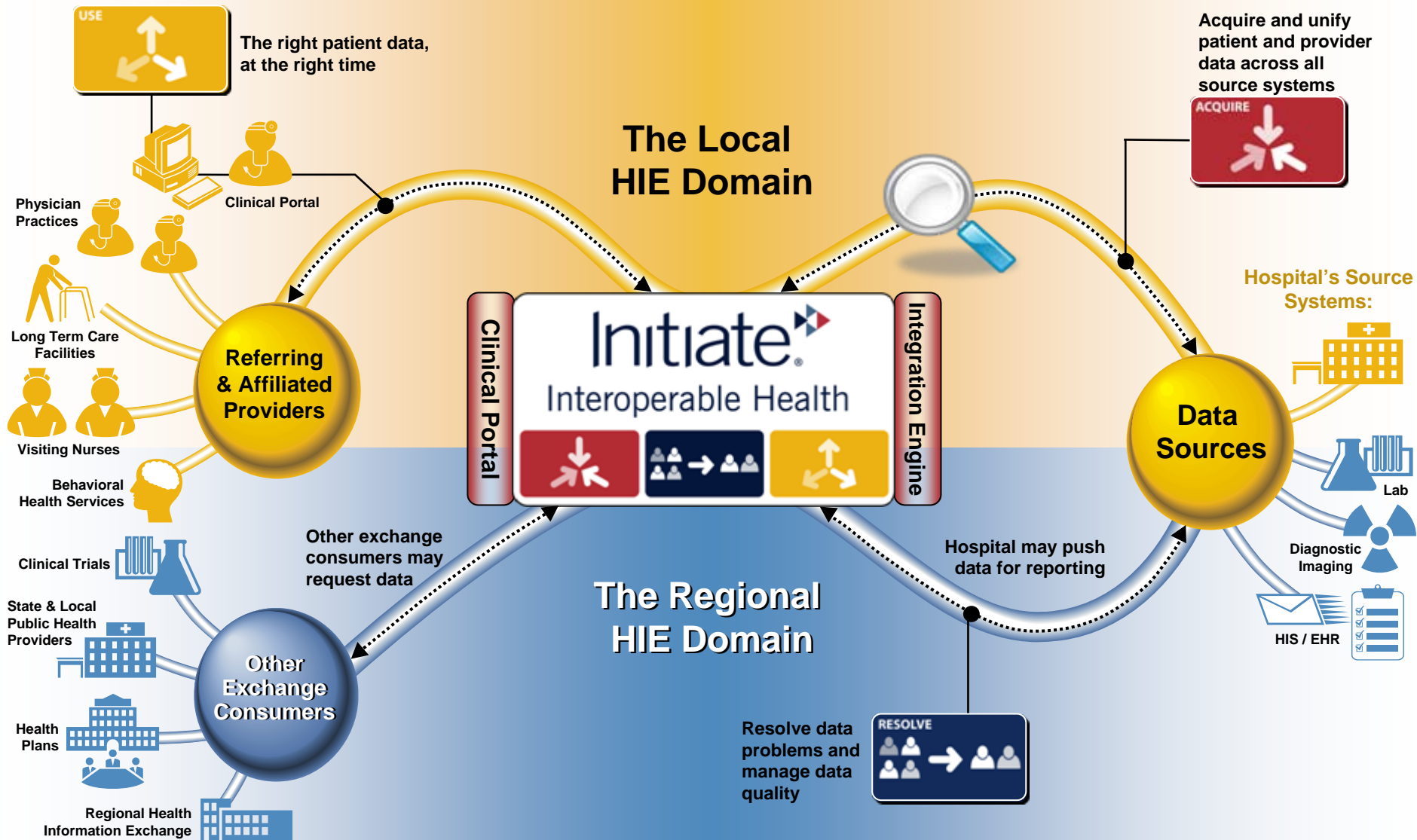
▪ IHE profiles are all about:

- › Knowing the right patient
- › Knowing what information is available about that patient
- › Providing a standard way to share that information

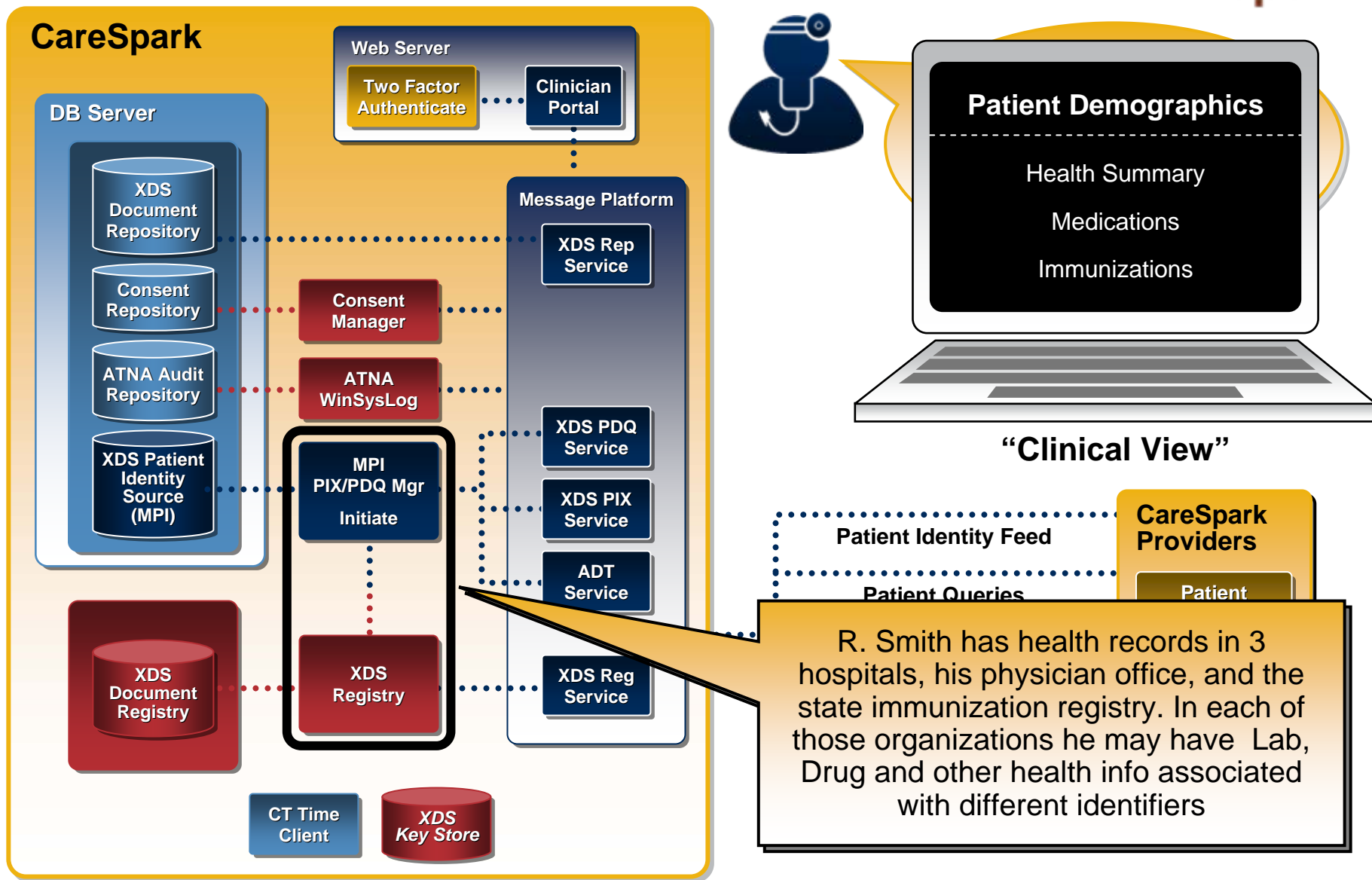
▪ Breaks down data silos and creates a true virtual EHR



Interoperable Health for Information Exchange



CareSpark IHE XDS Architecture

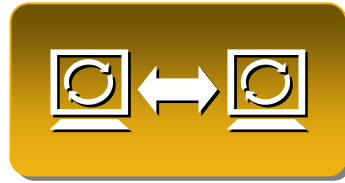


The Value of Interoperable Health



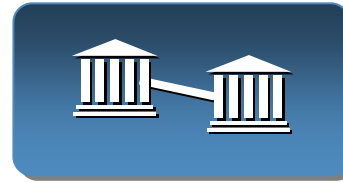
Improve Patient Care & Reduce Medical Risks

- ▶ Connect the right patient with the right results
- ▶ Understand patient/provider relationships
- ▶ Reduce hunting and gathering for information



Optimize Existing Investments

- ▶ Increase productivity by connecting fragmented information
- ▶ Lower Total cost of ownership
- ▶ Enable physician connectivity



Achieve a System-Centric View

- ▶ Recognize patients across all points of care
- ▶ View the same information across the care team
- ▶ Know providers at all points of service



Streamline Business Processes

- ▶ Humanize the patient experience
- ▶ Avoid duplication and improve data quality
- ▶ Enhance Fraud Detection
- ▶ Reduce time to payment

- ▶ Transform key business processes and speed the pace of adoption
- ▶ A single foundational technology can support all of these initiatives

Q & A

