



# IHE Patient Care Coordination

## Domain Update

# Agenda

- Introduction to PCC
- IHE Nursing Subcommittee Update
- Profiles for 2010
- Perinatal Workflow

# Patient Care Coordination

**Started in 2005 to support profiles addressing integration issues that cross providers, patient problems or time.**

- Deals with general clinical care aspects rather than technology infrastructure.
- Addresses workflows and information sharing needs that are common to multiple specialty areas.

# PCC Supported Care Areas

- **Nursing Care**
- **Emergency Care**
- **Obstetric Care**
- **Pediatric Care**
- **Chronic Care**
- **Clinical Decision Support**
- **General Practice**

# Nursing Care

# IHE Objectives for Nursing

- Advance nursing practice no matter where the patient/nurse interaction occurs.
- Endorse standard methods of nursing data collection, storage and sharing across care settings and time
- Encourage participation in the active nursing work of profile development
- Connect with nursing globally to advance continuity of care through interoperability
- Move nursing data between care settings across time

# Nursing Profiles

## 1. FSA Profile

- Move data from LTC into acute care and back without regard for vendor application.

## 2. PPOC Profile

- Standardization of the nursing process.

## 3. Nursing e-Summary

- Identify key data elements for patient report or patient transfer to build a data set

# Functional Status Assessment

- **Demonstrate use of Assessment Scales**
- **Evidence-based scales with strong reliability and validity.**
- **Widely accepted or used for accreditation**
- **Content Scales**
  - Numeric Rating Scale (NRS-11) for Pain
  - Braden Scale for Predicting Pressure Sore Risk©
  - Geriatric Depression Scale (GDS)
  - Minimum Data Set – Section G

# Patient Plan of Care

## ● Nursing Diagnosis (medical diagnosis Pneumonia)

- Respiratory alteration due to ineffective gas exchange
- Acute Pain upon coughing

## ● Outcome Identification

- Stabilize respiratory alteration
- Acute pain within patient acceptable limits

## ● Planning and Implementation

- Pulmonary Care
- Pain Control

## ● Evaluation

- Re-assessment of patient outcomes

# Nursing Key Points

- **Critical nursing processes and documentation requirements fit well into the IHE method.**
- **IHE provides a proven process for interoperability between disparate systems**
- **Collection of nursing data across time and care settings will allow research to determine evidence based practice guidelines for the future**

# Profiles for 2010

# E-Nursing Summary

- **Develop a list of data elements that will allow:**
  - Nurses to speak to the same data elements within the same setting
  - Electronically share critical patient data across acute/ambulatory care sites without regard for vendor
  - Develop quality measures based on a patient population rather than on a specific HIT system

# Patient Centered Coordination Plan

## ● Coordination of Care for Chronic Disease

- Exchange of a Coordination Plan
  - Tasks for Care Providers
    - Medication
    - Therapy
    - Examinations
- Periodic Review and Update
  - Tasks Completed
  - Updated Plans
- Reuse of Existing Work

# Newborn Discharge Summary

- **Compilation of care provided from birth to discharge for the newborn**
- **Focused on normal newborns**
- **Foundation for subsequent pediatric EHR records**
- **Incorporates initial screening tests**
- **MU: It's a discharge summary containing newborn's problems, medications, etc.**

# Postpartum Visit Summary

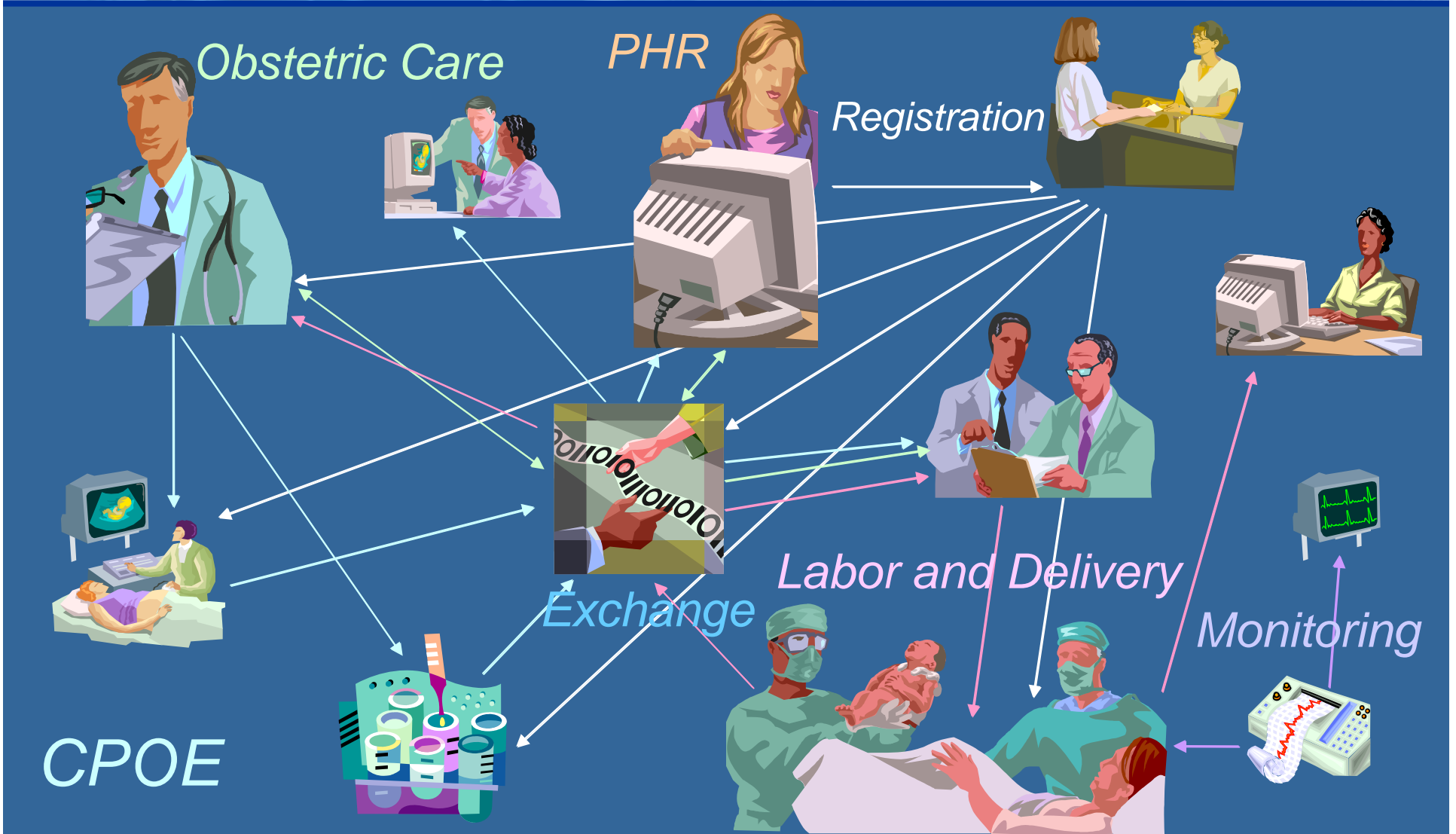
- **Compilation of care provided from discharge to final postpartum visit**
- **Abstracts relevant delivery and newborn information for inclusion in postpartum visit**
- **MU: Provides coordination of care from discharge until final postpartum visit**

# Perinatal Workflow

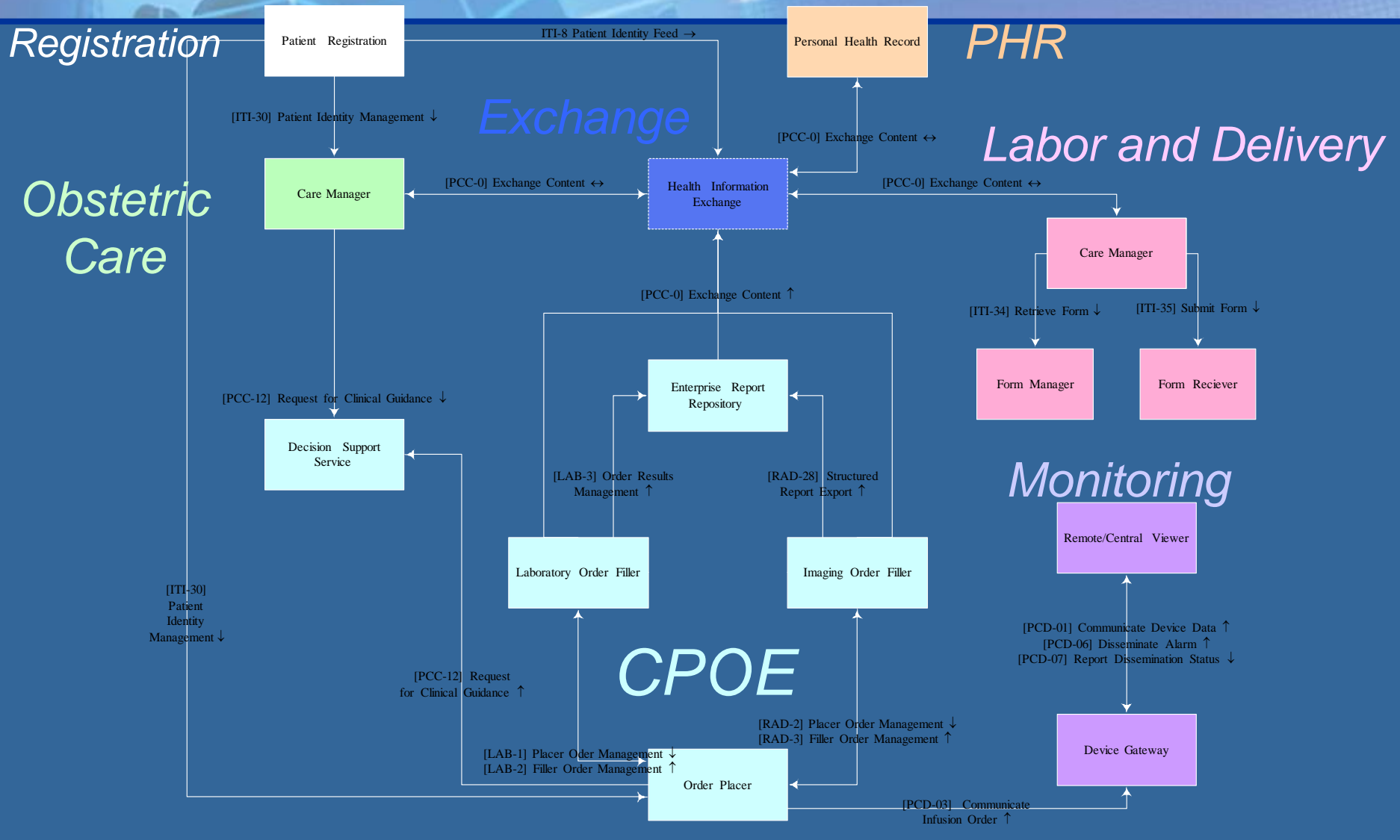
# Perinatal Workflow

- **Perinatal Workflows involve communication between:**
  - Ambulatory providers
  - Laboratories
  - Imaging Facilities
  - Labor and Delivery Centers
- **The IHE Perinatal Workflow Profile supports the continuum of care of expectant mothers and newborns utilizing existing work from:**
  - Patient Care Coordination
  - IT Infrastructure
  - Patient Care Devices
  - Laboratory
  - Radiology
  - Quality, Public Health and Research

# Perinatal Workflow (PWF)



# PWF Actors and Transactions



# Perinatal Workflow and Meaningful Use Standards

## ● Standards

- ✓ §170.202(a) Transport – XDS.b uses SOAP 1.2
- ✓ §170.205(a) Patient Summary Record – CCD and SNOMED CT®
- ✓ §170.205(f) Laboratory Orders and Results – HL7 2.5.1 and LOINC®
- ✓ §170.210(a) Encryption – ATNA uses AES and TLS

## ● Certification Criteria

- ✓ §170.302(a) Drug checks – Request for Clinical Guidance
- ✓ §170.302(b-d) Maintain Problem, Medication and Allergy Lists
- ✓ §170.302(r) Audit Logs – ATNA requires Audit
- ✓ §170.302(s) Integrity – ATNA and XDS.b use SHA-1
- ✓ §170.302(t) Authentication – ATNA requires authentication
- ✓ §170.304(a) CPOE – Order Placer/Order Fillers for Imaging and Labs
- ✓ §170.304(c) Demographics – PIX and PDQ Support Required Data
- ✓ §170.304(d) Clinical Decision Support – Request for Clinical Guidance
- ✓ §170.304(f-i) Electronic Access – XPHR/CCD, XDS-MS, XDS.b and XDM

# Perinatal Workflow and Meaningful Use Incentives

## ● §495.6(c) Stage 1 Criteria

- ✓ (1) Drug Checks – Request for Clinical Guidance
- ✓ (2) Problem List – XPHR Requires Problems
  - Supports SNOMED CT® or ICD-9-CM
- ✓ (3) Medication List – XPHR Requires Medications
  - Supports RxNORM and other vocabularies
- ✓ (4) Allergy List – XPHR requires Allergies
- ✓ (5) Patient Demographics – PIX/PDQ
- ✓ (6) Vital Signs – XPHR requires Vital Signs
- ✓ (8) Clinical Lab Tests – XD-LAB and HL7 V2.5.1
- ✓ (10) Decision Support – Request for Clinical Guidance
- ✓ (12) Medication Reconciliation – Built in all PCC Discharge Summaries
- ✓ (14) Summary Record – XPHR

# Perinatal Workflow and Meaningful Use Incentives

- **§495.6(d) Stage 1 Criteria for Eligible Providers**

- ✓ (1) CPOE – Order Placer/Order Fillers for Imaging and Labs

- XPHR, XDS-MS, XDS.b and XDM support:**

- ✓ (5) Electronic Copies
- ✓ (6) Timely Access
- ✓ (7) Clinical Summaries
- ✓ (8) Exchange of Key Clinical Information

- **§495.6(e) Stage 1 Criteria for Hospitals**

- ✓ (1) CPOE – Order Placer/Order Fillers for Imaging and Labs

- XPHR, XDS-MS, XDS.b and XDM support:**

- ✓ (3) Electronic Copies
- ✓ (4) Discharge Summaries including Procedures and Instructions
- ✓ (5) Exchange of Key Clinical Information

# Provide us Feedback

## ● See Perinatal Workflow in Action!

- Parts of the profile are being demonstrated this week
- Because it builds on existing work, products may already support it

## ● Download the Profile

- [http://www.ihe.net/Technical\\_Framework/public\\_comment.cfm#pcc](http://www.ihe.net/Technical_Framework/public_comment.cfm#pcc)
- <http://tinyurl.com/IHEPWF> (redirects to above)

## ● Submit your feedback

- <http://forums.rsna.org>

# IHE Patient Care Coordination

- **Planning Committee**

- Mike McCoy
- Keith Boone

- **Technical Committee**

- Tone Southerland
- Laura Heermann Langford

- **Nursing Subcommittee**

- Marcia Veenstra
- Audrey Dickerson

- **For more information or to participate:**

[ihe@himss.org](mailto:ihe@himss.org)